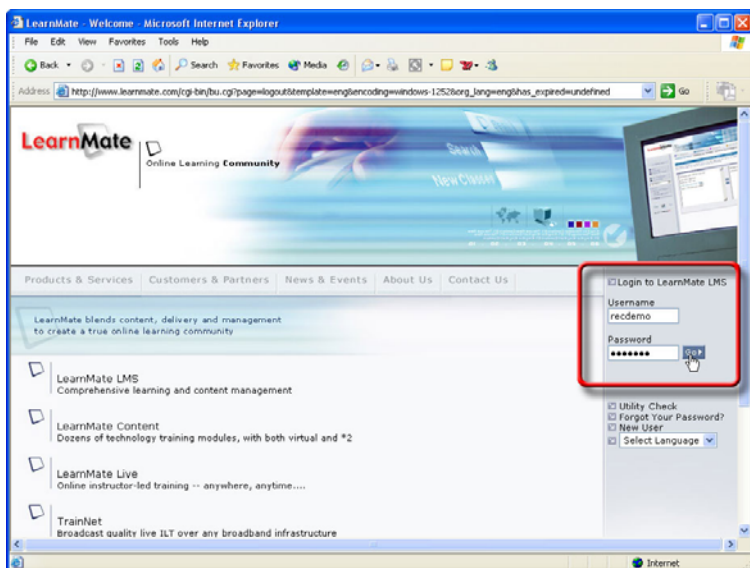




Instructions for Viewing intelitek's Robotics Engineering Curriculum Demonstration:

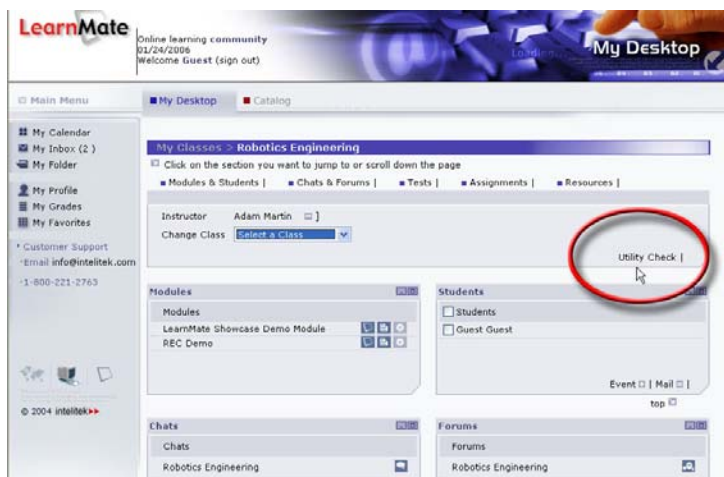
1. Launch your internet browser, and navigate to www.learnmate.com
2. On the right side of the screen, log in using the following user name and password:
 - Username: recdemo
 - Password: recdemo



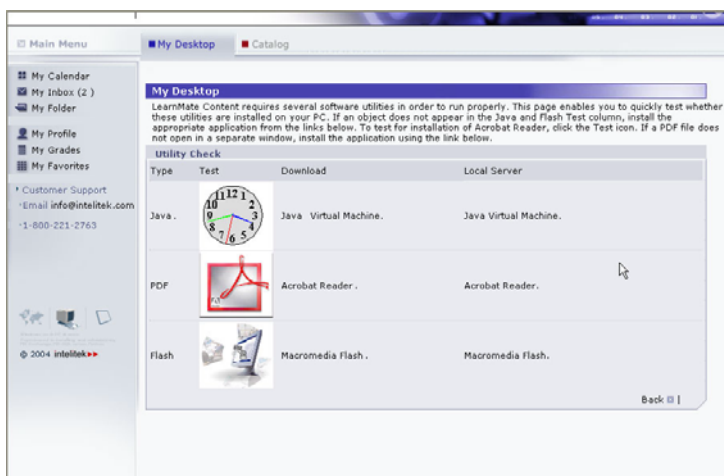
3. Under My Classes select Robotics Engineering



4. Select Utility Check on the right side of the screen.




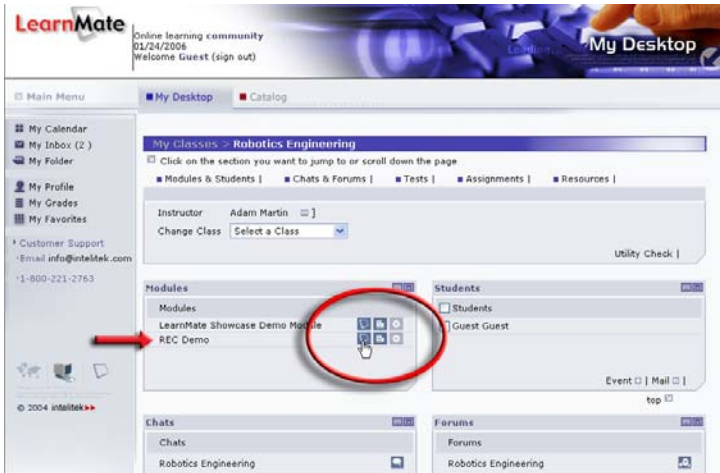
5. Follow the instructions on the screen.



6. When you are sure you have all the necessary software installed on your system, click the Back button.

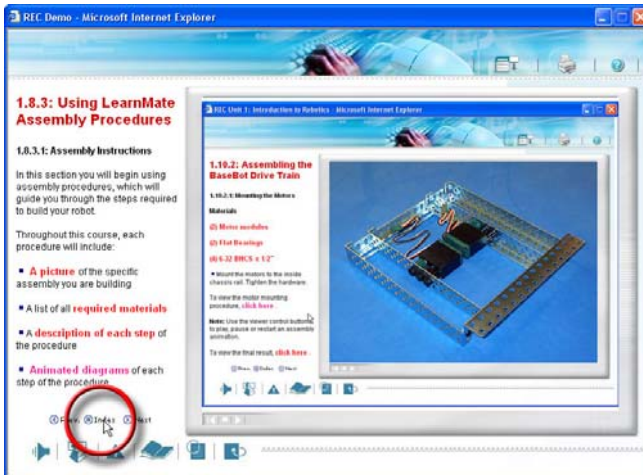


7. Under Modules, click the Launch Module icon  next to the REC Demo.



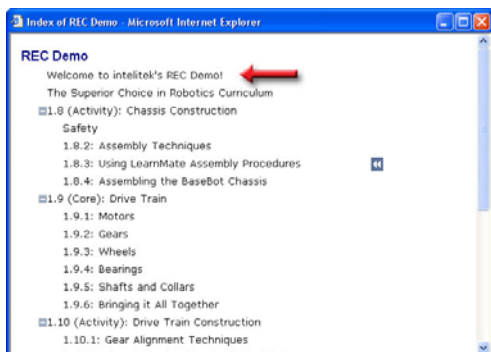
The LearnMate viewer opens.

8. Click the index button  Index.



The module index window opens

9. Scroll to the top of the index and click "Welcome to intelitek's REC Demo!"



10. Follow the instructions in the LearnMate viewer and enjoy the demonstration.