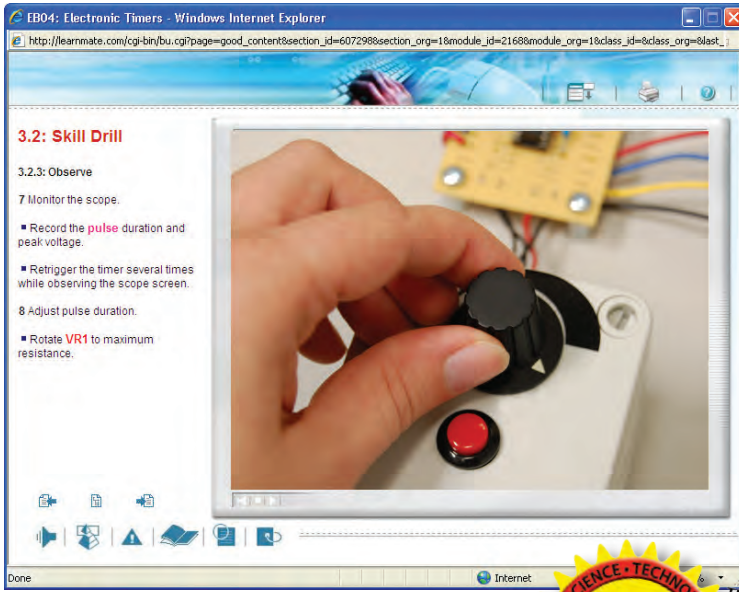


Electronic Timers (EB04)

INDUSTRIAL POWER ELECTRONICS



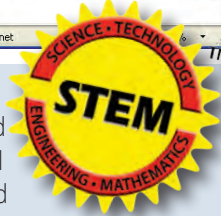
Electronic Timers (EB04) delivers hands-on skills in operating the same industrial-grade timer devices used extensively in time-delay relays, motor drives and digital circuits. Students acquire skills including connecting and operating a 555 timer, verifying an astable timer circuit and connecting and operating an electronic pulse train

The skills-based curriculum builds on the concepts learned in the prerequisite courses: Oscilloscope (EB01A) and Digital Multimeter (EB01B). Electronic Timers (EB04) presents six additional skills with a timer Flexponent™ panel which attach to the JobMaster Learning Station (not included). Panels are easily added and exchanged allowing the workspace to be re-configured as multiple students progress through the course.

Core concepts are taught through self-paced e-learning curriculum. All the necessary resources, including printable instructions, wiring diagrams and troubleshooting charts, are available online, ready for use at the JobMaster Learning Station.

Instructors are also provided comprehensive resources, including a detailed instructors' guide. Teachers' versions of schematics and wiring diagrams as well as tips and tricks are all one click away.

With JobMaster, you can be sure your training program will deliver the skills needed for success in automated manufacturing careers!



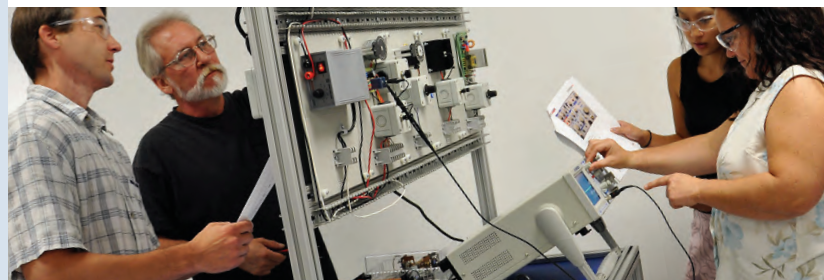
JOBMASTER SKILLS-BASED TRAINING

The JobMaster™ Industrial Maintenance and Mechatronics Training teaches the specialized skills required for today's industrial technicians. JobMaster™ provides a superior blended learning solution for automated manufacturing training by combining industrial-grade components with engaging e-learning curriculum.

JobMaster™ courses are entirely skill-based, consisting of individual exercises that reproduce essential tasks performed by maintenance technicians, equipment operators, and machine repairmen. Each skill has been analyzed and field-tested by qualified technicians to teach the specific skills needed in the industrial environment.

intelitek's partners in development of the curriculum include twelve major US industrial companies, including Boeing, Caterpillar, Ford, GE, and US Steel.

**JobMaster™, the new standard in
industrial maintenance and mechatronics training!**



Fully equipped Learning Station shown. Learning station sold separately. Some panels and components shown may be sold separately.

POWERED BY

LearnMate™

JobMaster™ courses are powered by LearnMate™- intelitek's innovative e-learning platform. LearnMate's self-paced interactive content may be deployed stand-alone or through the robust learning management system (LMS). The LearnMate™ e-learning suite provides everything needed for the ultimate blended learning experience:

- SCORM-compliant interactive content
- Anytime, anywhere accessibility
- Student and class management
- Grade tracking
- Skill/competency reporting mapped to national academic skill standards

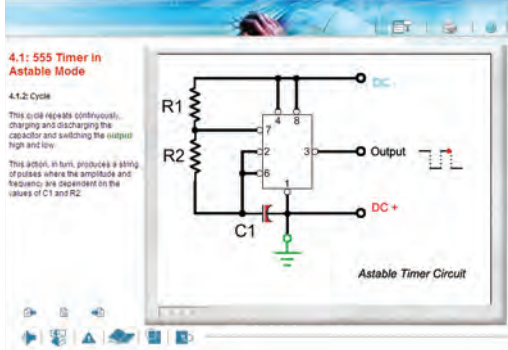
intelitek  [®]
www.intelitek.com

Electronic Timers (EB04)

Materials Included

Order #14-EB04

- Electronic Timers (EB04) E-Learning Course and Teachers' Guide



- Flexponent™ panels:
 - E089 Timers and Triggers Panel

Materials required (sold separately):

- JobMaster™ Learning Station Order #10-LS00-0200
- Power Control Panel (120V): Order #10-PC04-0000

* International step-down transformer package (Order #10-PC09-0000) required for international applications.

- Prerequisite courses
 - Thyristor Electric Motor Drives (EB03) Order #14-EB03

Skills Acquired

- Skill 1 Locating Timer Pins
- Skill 2 Verifying a Monostable Timer Circuit
- Skill 3 Connecting and Operating a 555 Timer in Monostable (One-Shot) Mode
- Skill 4 Verifying an Astable Timer Circuit
- Skill 5 Connecting and Operating a 555 Timer in Astable (Multivibrator) Mode
- Skill 6 Verifying a Pulse Train Circuit
- Skill 7 Connecting and Operating an Electronic Pulse Train



INDUSTRIAL POWER ELECTRONICS

Electronic Timers (EB04) is a fundamental course in the Industrial Power Electronics series which includes comprehensive instruction in industrial power, including test equipment, power supplies and motor drives. These courses deliver specific identified skills for industrial maintenance and mechatronics careers.

The Industrial Power Electronics series:

- Digital Multimeter (EB01B)
- Oscilloscope (EB01A)
- Single-phase and Three-phase Power Supplies (EB02B)
- Servo Motor Drives (EB06)
- and more!



Fully equipped Learning Station shown. Learning station and some panels shown sold separately.

Make Industrial Power Electronics part of a comprehensive STEM program!

Add virtual, hardware-based or blended learning labs to deliver in-depth Industrial Maintenance, Mechatronics and Advanced Manufacturing programs.

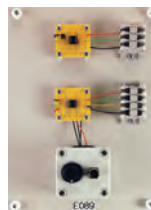


Panel & Hardware Specifications

All included Flexponent™ panels meet the following specifications:

- Construction: 3/8" (9.5 mm) thick environmentally stabilized, chemically resistant, non-conductive, high density polyethylene.
- Terminal strips Industry-standard recessed and insulated fasteners rated for 50-amps at 600 volts.
- Dimensions 8"W x 11.5"H x 0.375"D (203 mm x 292 mm x 9.525 mm)

Panel E089: Timers and Triggers



- Panel type : single
- 1 Timer
 - 1 Potentiometer
 - 1 NO pushbutton switch

Most courses require a JobMaster™ Learning Station, sold separately. Some courses require other hardware purchased separately or as part of prerequisite courses in the same series. All included and required materials are noted on each product data sheet.

Affiliated with:



All specifications subject to change without notice. All trademarks are property of their respective owners.



444 East Industrial Park Dr. • Manchester, NH 03109
Phone: 800-221-2763 • info@intelitek.com

www.intelitek.com

35-EB04-DS01 Rev-C